

Corners to be Indexed

E1/4 32-107-42

STATE OF MINNESOTA, }
 COUNTY OF MURRAY, } ss.

I hereby certify that the within Instrument was filed in this office for record on the 13TH day of DECEMBER A.D. 20 19 at 9:00 o'clock A. M. and was duly recorded as Document No. _____

I hereby certify that this document and the data contained herein was prepared by me or under my direct supervision.

[Signature]

Aug. 14, 2019
 Date

Daniel L. Bueltel
 License No. 43844

[Signature]
 County Recorder

CERTIFICATE OF LOCATION OF GOVERNMENT CORNER

Land survey monuments situated in Section 32, Township 107, Range 42, 5TH P.M.

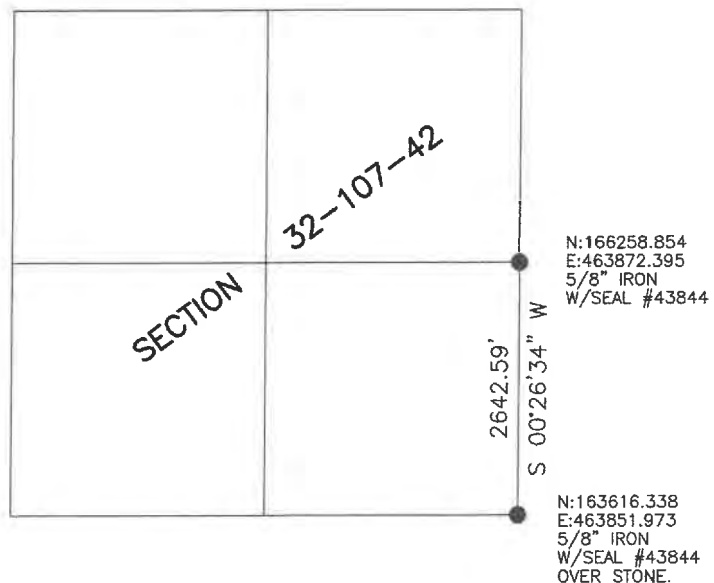
STATE OF MINNESOTA, County of MURRAY

STATEMENT OF EVIDENCE:

- 1861 - Original Government Survey.
- 1899 - J.W. Woolstiencroft set a pine stake at the corner.
- 1931 - Murray County Highway Department set a stone at the corner.
- 2015 - Murray County Highway Department found a 5/8" iron at the corner.



- FOUND MONUMENT
- SET MONUMENT



Minnesota State Plane Coordinate
 System Murray County Datum NAD83 (1996)

Statement of Evidence

E1/4 32-107-42

In 1861, L.G.M. Fletcher did the original subdivision of the township.

On August 21, 1899, J.W. Woolstiencroft set a pine stake was set at the corner.

On April 6, 1931, the Murray County Highway Department set a stone at the corner.

On June 15, 2015, the Murray County Highway Department found a 5/8" iron at the corner.

On July 18, 2019, Bueltel-Moseng Land Surveying found an iron at the corner. We removed the iron and dug with a backhoe for the stone. We did not find anything else.

On August 13, 2019, Bueltel-Moseng Land Surveying set a 5/8" iron with seal #43844 in place of the found iron.